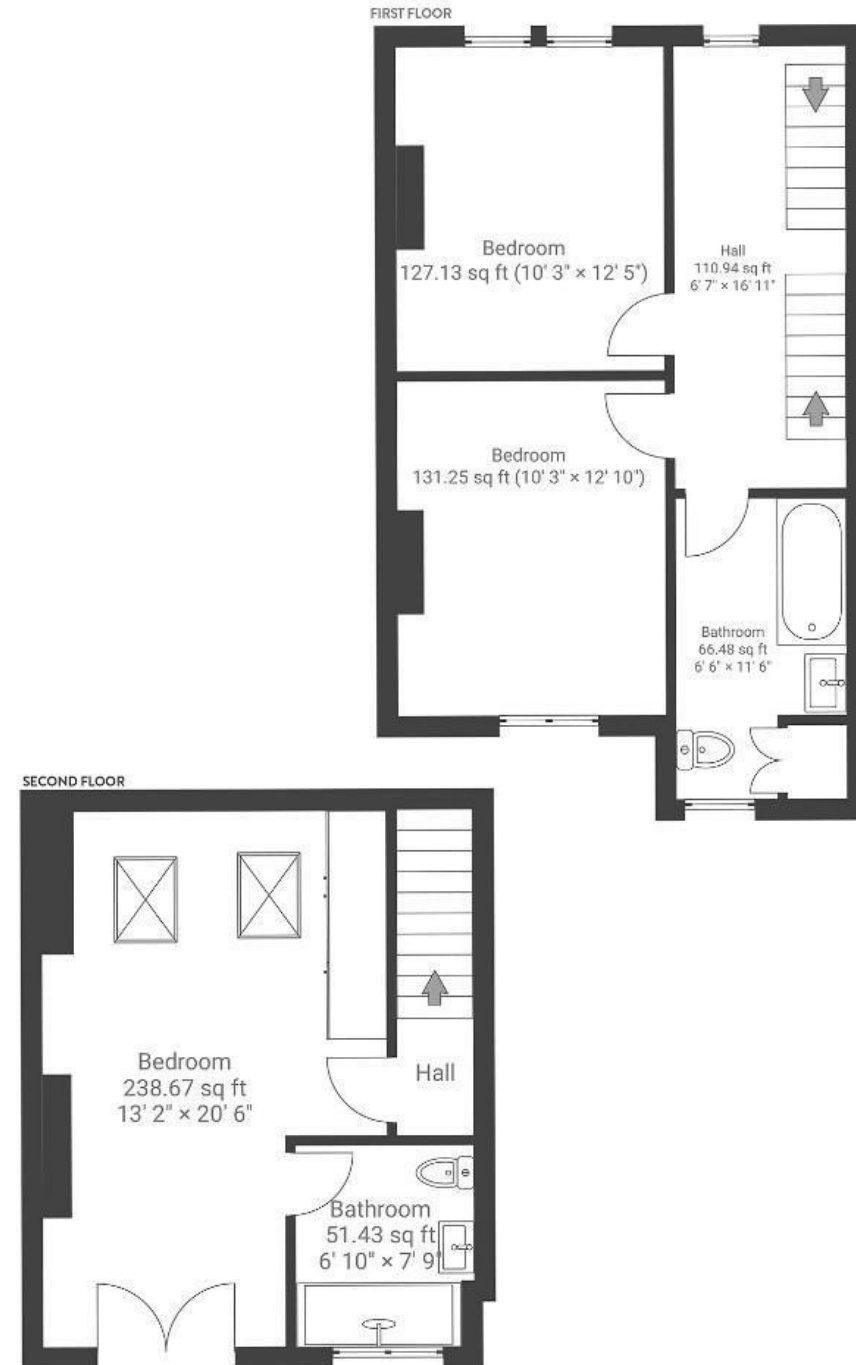
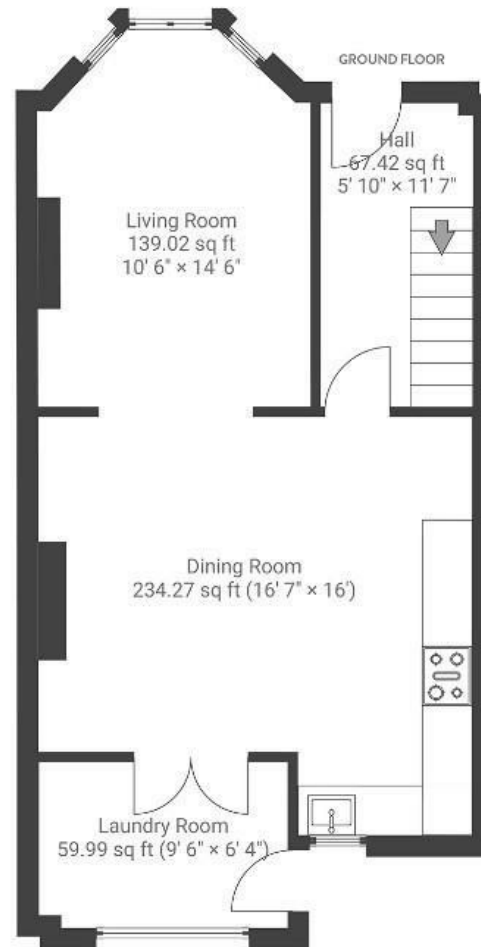


Sandringham Road

BRISLINGTON

APPROXIMATE FLOOR AREA
122 SQM / 1314 SQFT



Boardwalk

Sandringham

BRISLINGTON, BRISTOL

£

£485,000



BS4 3PR

zzz

3 Bedrooms



2 Bathrooms

" We've loved watching the balloons drift past from the loft - you can follow them from the Suspension Bridge to Purdown. The Deli foccaica has become a regular WFH treat, but it's the green space and friendly neighbours we'll miss most "

